

LOCK FOR CABINET DOORS

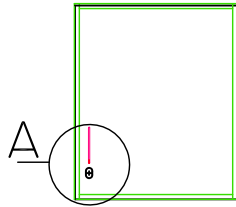
ASSA ABLOY 1592

LOCK FOR CABINET DOORS, ELECTRIC CABINETS ETC.
WITH LATCH

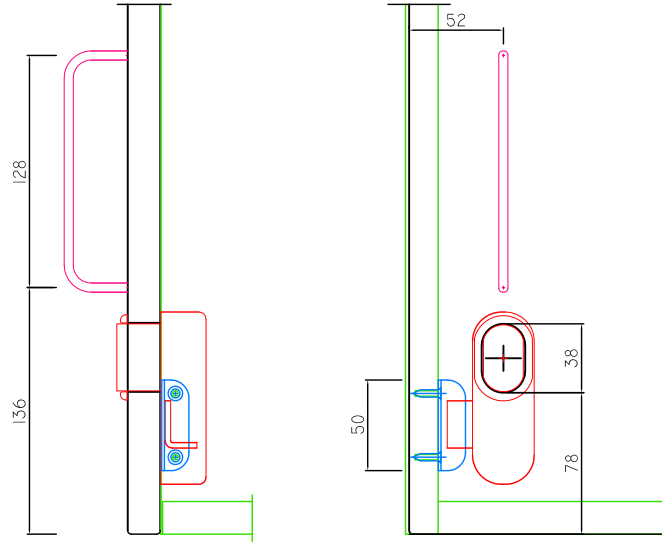
[HTTP://WWW.ASSA.SE/EN/SITE/ASSA/PRODUCTS/?GROUPID=5385](http://www.assa.se/en/site/assa/products/?groupId=5385)



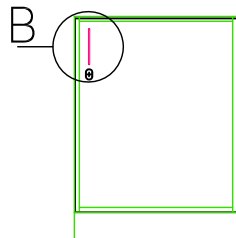
HANGING CABINET



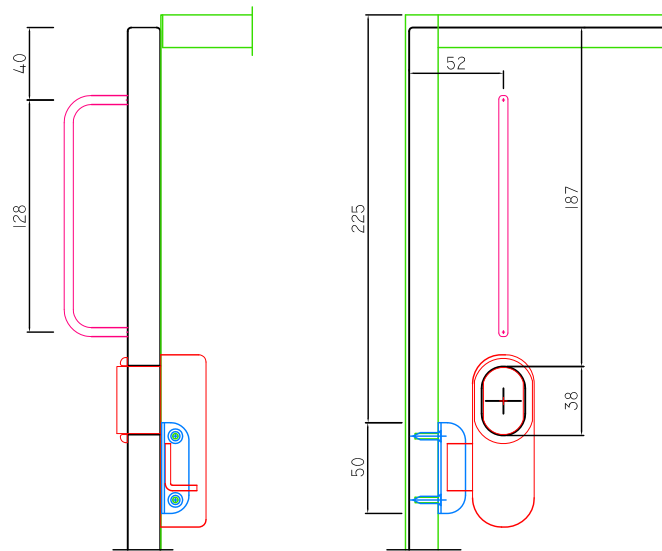
A



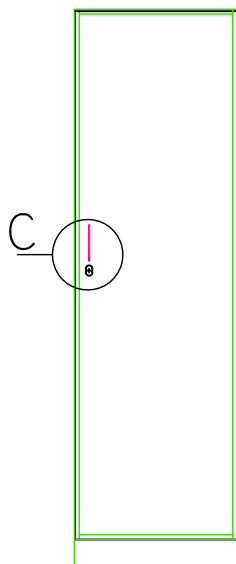
LOWER CABINET



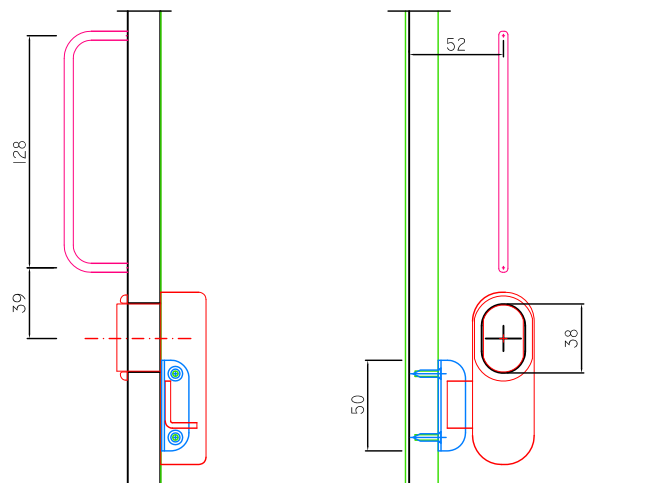
B



HEIGHT CABINET



C



LOCK FOR CABINET DOORS

ASSA ABLOY 1596

LOCK FOR MEDICINE CABINETS, REFRIGERATORS ETC.

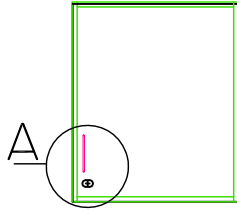
WITH LATCH AND DEADLOCKING LATCH

[HTTP://WWW.ASSA.SE/EN/SITE/ASSA/PRODUCTS/?GROUPID=5385](http://www.assa.se/en/site/assa/products/?groupID=5385)

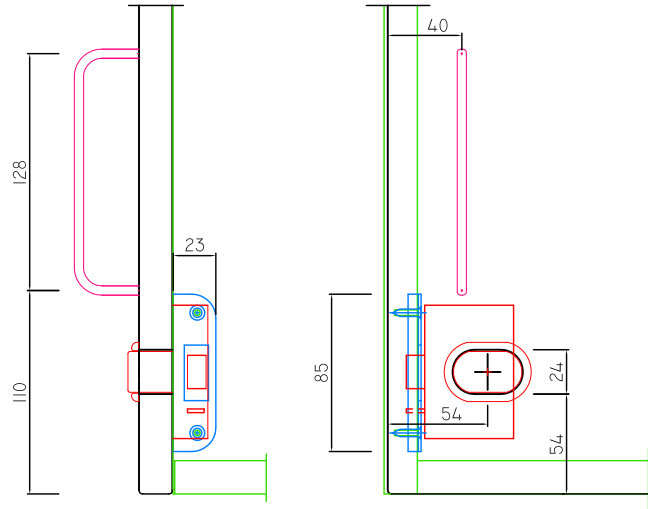


85 x 23 x 7 MM

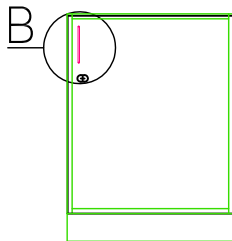
HANGING CABINET



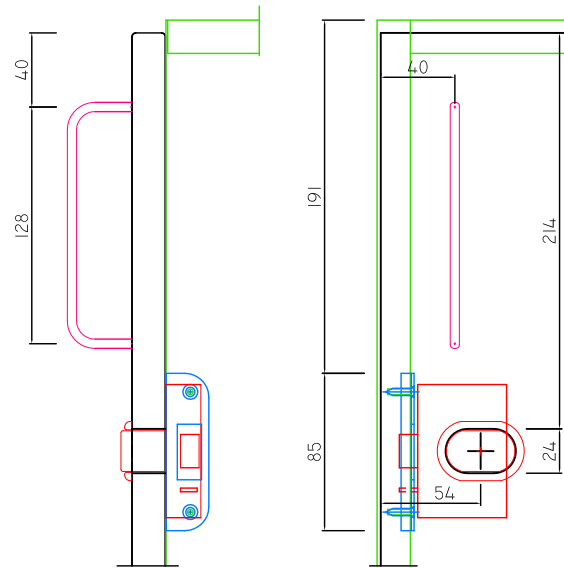
A



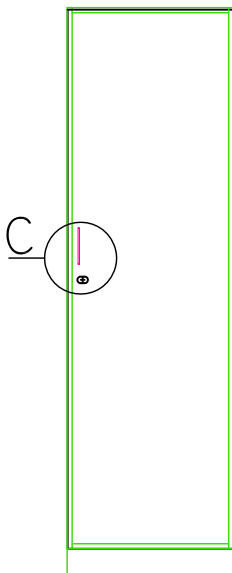
LOWER CABINET



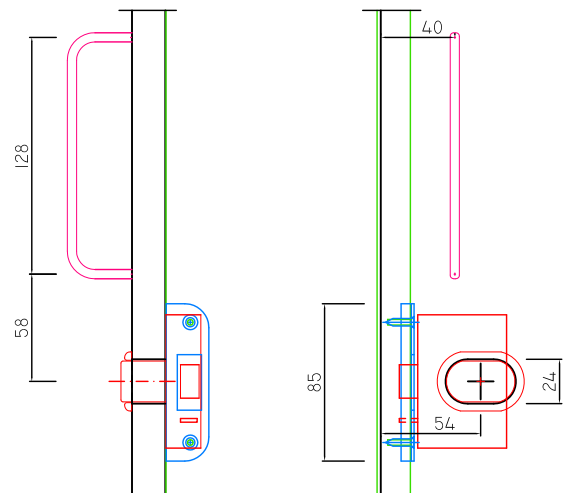
B



HEIGHT CABINET



C



LOCK FOR CABINET DOORS

ASSA ABLOY 593

OUTCUT FOR LOCK ABOVE OR BELOW THE LOCK.

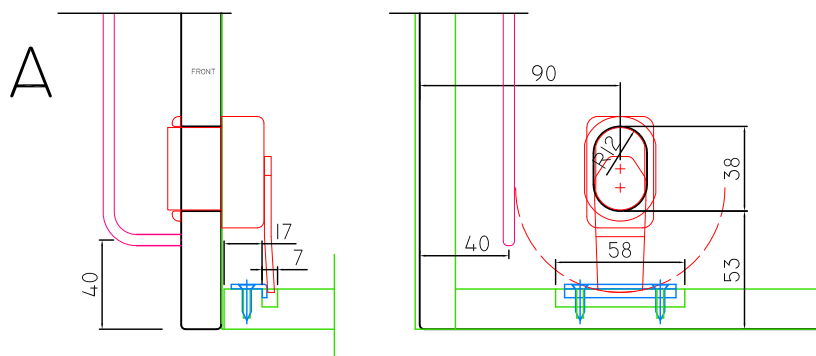
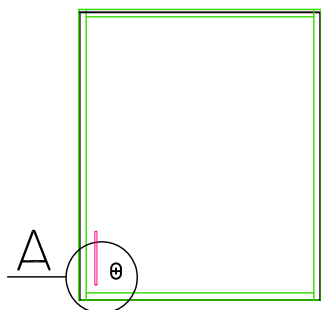


LOCK 593

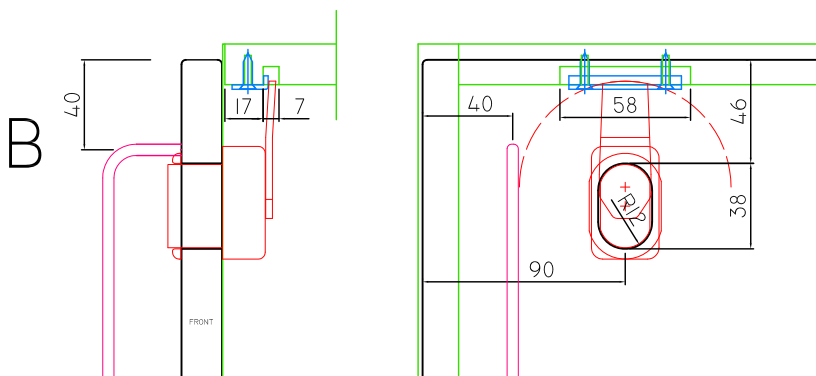
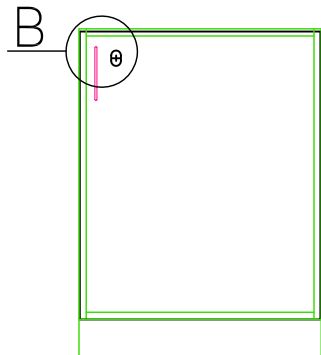


STRIKER PLATE 2892-6
50 X 17 X 6

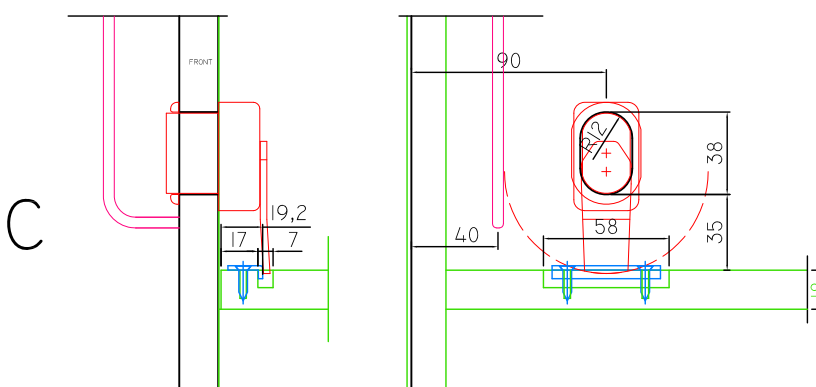
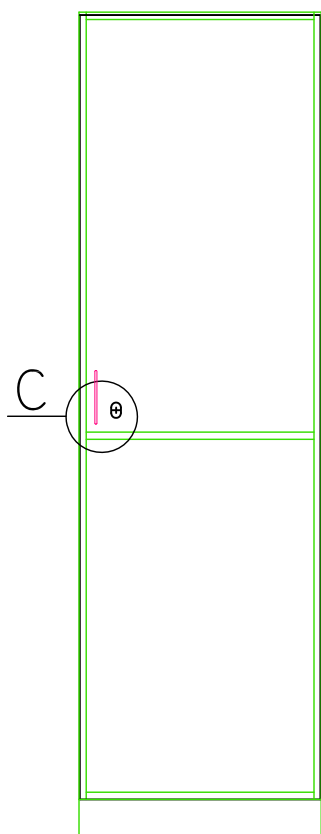
HANGING CABINET



LOWER CABINET



HEIGHT CABINET



LOCK FOR CABINET DOORS

ASSA ABLOY 593

OUTCUT FOR LOCK IN CABINET SIDE.

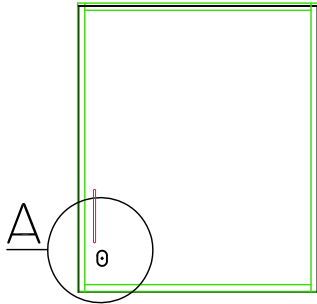


LOCK 593

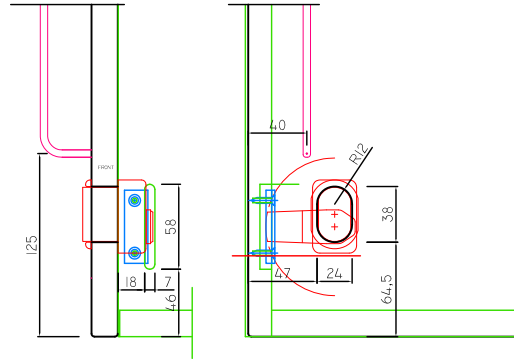


STRIKER PLATE 2892-6
50 x 17 x 6

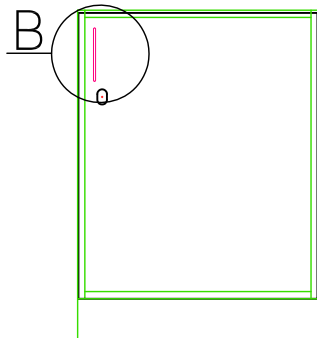
HANGING CABINET



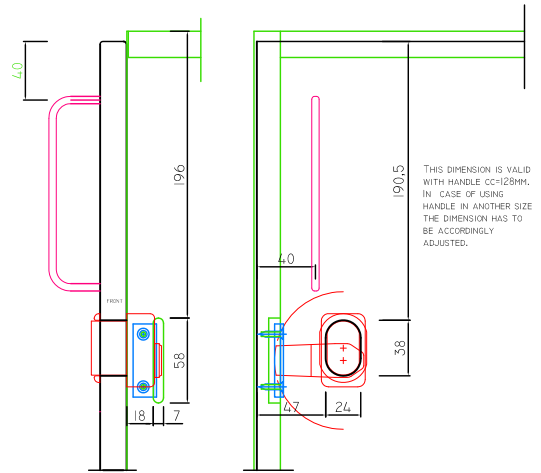
A



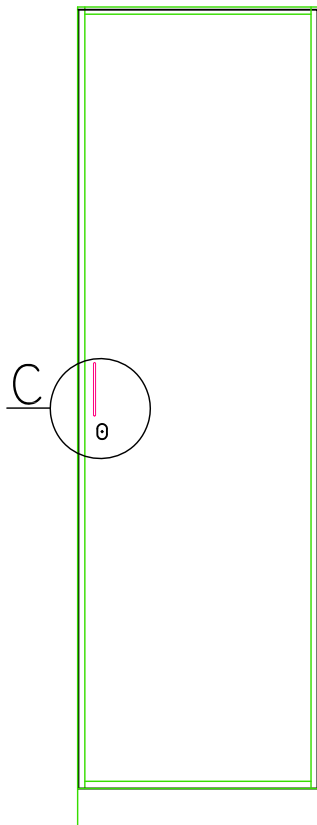
LOWER CABINET



B



HEIGHT CABINET



C

